
SELLERS

EXCELLENCE OF
REAL ESTATE SERVICE



ADVISORY

SONOMA, NAPA &
MARIN COUNTIES



MEET THE TEAM



ES
GS

The Ehrlicher Styles Group shares an aptitude for the profession which shows in their strong plan development with each client.

Ryan and Lindsey Ehrlicher Styles embody the essence of second-generation Realtors®, inheriting a legacy steeped in real estate and financial acumen. Their shared aptitude for the profession reflects in their meticulous planning and individualized strategies for each client. Their unwavering commitment to the community shines through their active involvement in local non-profits and real estate initiatives. This genuine love for their community propels Ryan and Lindsey's dedication to their clients, fueling their ambition to understand client needs through clear communication and comprehensive local market insights.



Lindsey Ehrlicher Styles

LICENSE PARTNER & REALTOR®

+1 (707) 718-2116

DRE # 01879097

Lindsey Ehrlicher Styles is an aspiring Real Estate Broker deeply driven by her passion for real estate.

Lindsey's roots trace back to South Dakota, but for over three decades, she has found her home in Northern California.

Engaged in pivotal volunteer leadership roles within Sonoma County's business organizations, Lindsey brings a blend of commitment and community-oriented ethos to her real estate pursuits.

Her dedication to excellence and expertise promise a steadfast commitment to serve clients with tailored solutions and a personalized touch.



ESG

Ryan Styles

BROKER ASSOCIATE, PRIVATE
OFFICE ADVISOR, & REALTOR®

+1 (707) 540-2000

DRE # 01276948

Ryan Styles, a licensed Associate Broker and native of Sonoma County, epitomizes excellence within the Real Estate Industry.

Garnering over 25 years of experience as a Global Real Estate Advisor, Ryan is esteemed for his meticulous attention to detail, unwavering professionalism, and dedication to customer service.

His robust expertise and seasoned background make him a trusted figure in real estate transactions, ensuring clients receive top-notch guidance and seamless experiences.

Ryan takes pride in his local roots, contributing to the community's fabric while setting an exemplary standard of excellence in the industry.



Bianca Broos

License Partner & Regional Manager

+1 (707) 547-7037

Bianca@EngelVoelkers.com

As a License Partner & Regional Manager at EV Sonoma County & EV Marin County, Bianca has served in the Real Estate & Housing Industry for over 15 years,

She also founded Bianca Broos Company, an elevated approach to Business Strategy, Brand Development, and Marketing Fulfillment. Her company serves as an answer to the growing need to differentiate clients in competitive and over-saturated markets.

She and her team specialize in creating effective business & brand strategies for Real Estate Teams and Thought Leaders, New York Times Bestsellers, and Fortune 500 Companies across many industries. Her company supports teams of all sizes in developing a strong company culture, creating an engaging brand presence & strategically positioning themselves and their stakeholders for growth.



Paul Benson

BROKER

& EV LICENSE PARTNER

+1 (435) 640-7441

UT#5757781SA00

paul.benson@evrealestate.com

Paul Benson, co-founder, and CEO of Engel & Völkers Gestalt Group, operates 55 offices across Utah, California, Nevada, Arizona, Colorado, Washington, and Idaho. He represents the most exclusive real estate and works with some of the most well-known clients in the world. With his extensive reach in global marketing and local market expertise, he has built the ultimate cross-marketing platform to showcase exceptional homes to the clients that will appreciate them the most.

Paul has been regularly ranked the #1 agent in Utah for sales volume, and total career sales of over 3,000 transactions, and \$2.8 billion in closed sales. Within the past 6 years, he has been regularly ranked the #1 agent worldwide among the entire Engel & Völkers Network. Through these accomplishments, Paul has built relationships with hundreds of top agents around the world, which has created an invaluable network for his clients.



ENGEL & VÖLKERS®
GESTALT GROUP

ELEVATING THE APPROACH

Social Influence

We have a dedicated marketing and branding team that remains at the pulse of social trends. **Our approach has continued to create organic growth & reach with an engagement rating of over the industry's standard.** From property tour livestreams and elevated marketing collateral to magazine-style social graphics and engaging stories, our team is equipped to **elevate your property.**

Building Property Ambassadors

Who you market to and how sets the tone for the success of the sale. As Top Producing Realtors with Engel & Völkers, we have built an expansive national & global network of top-producing Brokers that we exclusively market to. One way we approach this is by hosting exclusive broker opens that create an elevated experience to further encourage cross-marketing of your property. **This partnership puts your property in front of the eyes of some of the most exclusive networks in the business.**

Going The Extra Mile

When you choose the Ehrlicher Styles Group, you have the support of experienced Realtors throughout the process. Our in-house brand strategy team works to create an elevated look to your property digitally and supports us in positioning it to the most exclusive markets. Our access to elevated marketing fulfillment cuts down lead times and can help us expedite the marketing process to keep your house front and center in the market. **When you choose our group, we go the extra mile and are committed to serving you with excellence.**



ELEVATING YOUR PROPERTY'S MARKETING APPROACH



Every market is different, and every person is distinct.

We specialize in effective marketing strategies & techniques and partner with our in-house marketing team to customize the approach for each new listing. We have a global approach & network with a local focus.

By creating a strong digital presence for the listing we will be able to create an enhanced & virtual experience for each potential buyer, elevate the reach of the home & better capture strong and potential leads through various digital channels.

ESG

A CLOSER LOOK AT OUR MARKETING TACTICS



CUSTOM LISTING PAGE

Your property gets its own website, customized to showcase what makes it attractive to potential buyers. Property details and contact photos all on an easy to access page, elevated with lifestyle photography and dynamically branded elements to entice and inspire potential buyers.



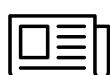
SOCIAL MEDIA CAMPAIGN

A fully customizable campaign on social media platforms utilizing the power of interactive social elements, video & proactive ad campaign strategies. Targeted to local and regional markets. Professionally created, properly marketed



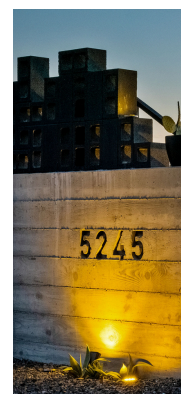
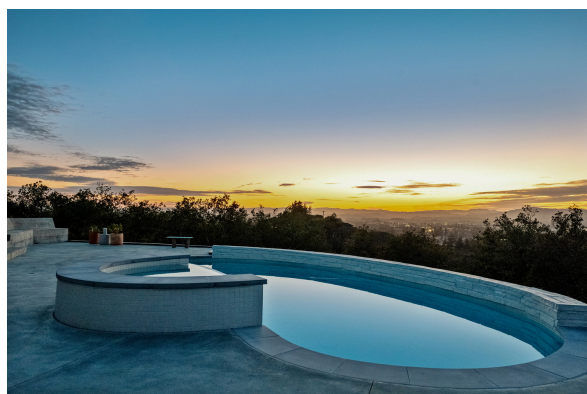
NATIONAL REACH. GLOBAL NETWORK.

We have an incredible network that reaches far beyond the borders of Northern California. We put your property in front of the eyes of a global audience, creating even more opportunity for purchase.



PRESS & MEDIA OUTREACH

Our network empowers us to create even more location specific advertising opportunities, including direct mail advertising, periodicals, magazines, radio & television.





WE GIVE YOU CONCIERGE LEVEL SERVICE & POSITION YOUR PROPERTY WITH EXCELLENCE

The Ehrlicher Styles Group is always looking to the future and how we can continue to innovate our approach.

Our goal is to create even better outcomes for our buyers and sellers while giving them a memorable, proactive & elevated experience.

We have spent the better part of three decades building a strong network of Realtor partners.

We believe in creating a lifestyle marketing approach to attract a wider breath of potential buyers, elevating the positioning of a home.

From exclusive broker opens & direct network marketing, our sellers get higher quality offers.



ESG

We create ease at every step of the transaction

Our decades of expertise and precise tactics empower you to have a competitive presence in the market. We have a powerful network of vetted vendors that align with our service promise. You'll be cared for at every step of the transaction.

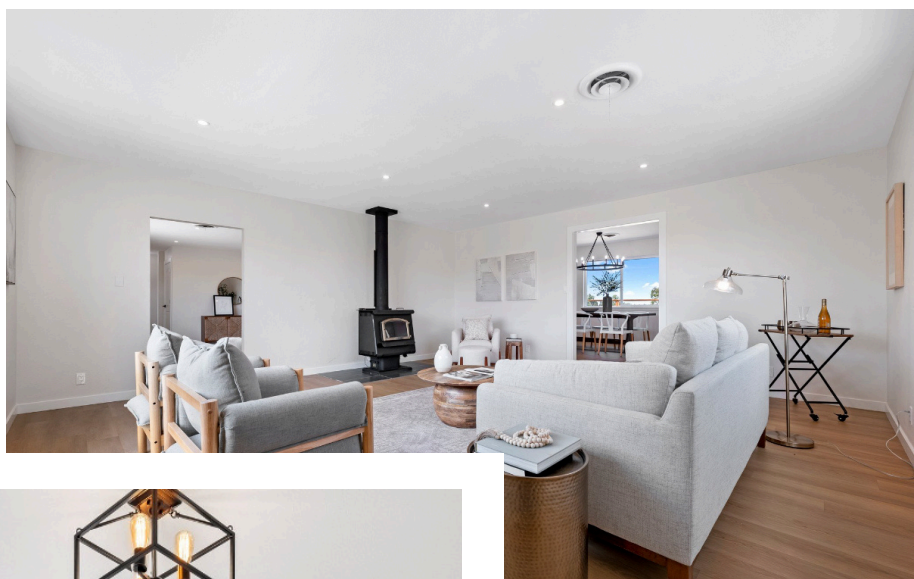
EMPOWERING THE SALE WITH OUR NETWORK

We are proud to be part of the incredible network of Engel & Volkers Global Advisors. This is a company and brand that supports us in elevating our approach and creating better outcomes for our clients. When you work with us, you work with a team of global advisors who are intentional about giving you the attention and the advise you deserve.



Internal Marketing

Combined local community connections, plus years of local business connections and close relationships with top agents



Feedback & Follow Up

We follow-up with 100% of brokers who request a disclosure package and/or show the property to their client's for feedback and interest level



Photo & Video

Maximum exposure demands superlative stills and moving photos. Elevated photography and a dynamic virtual tour to maximize your listing's potential



MLS Broker Tour Promotion

Announcement at marketing meetings and promoted Broker Tour



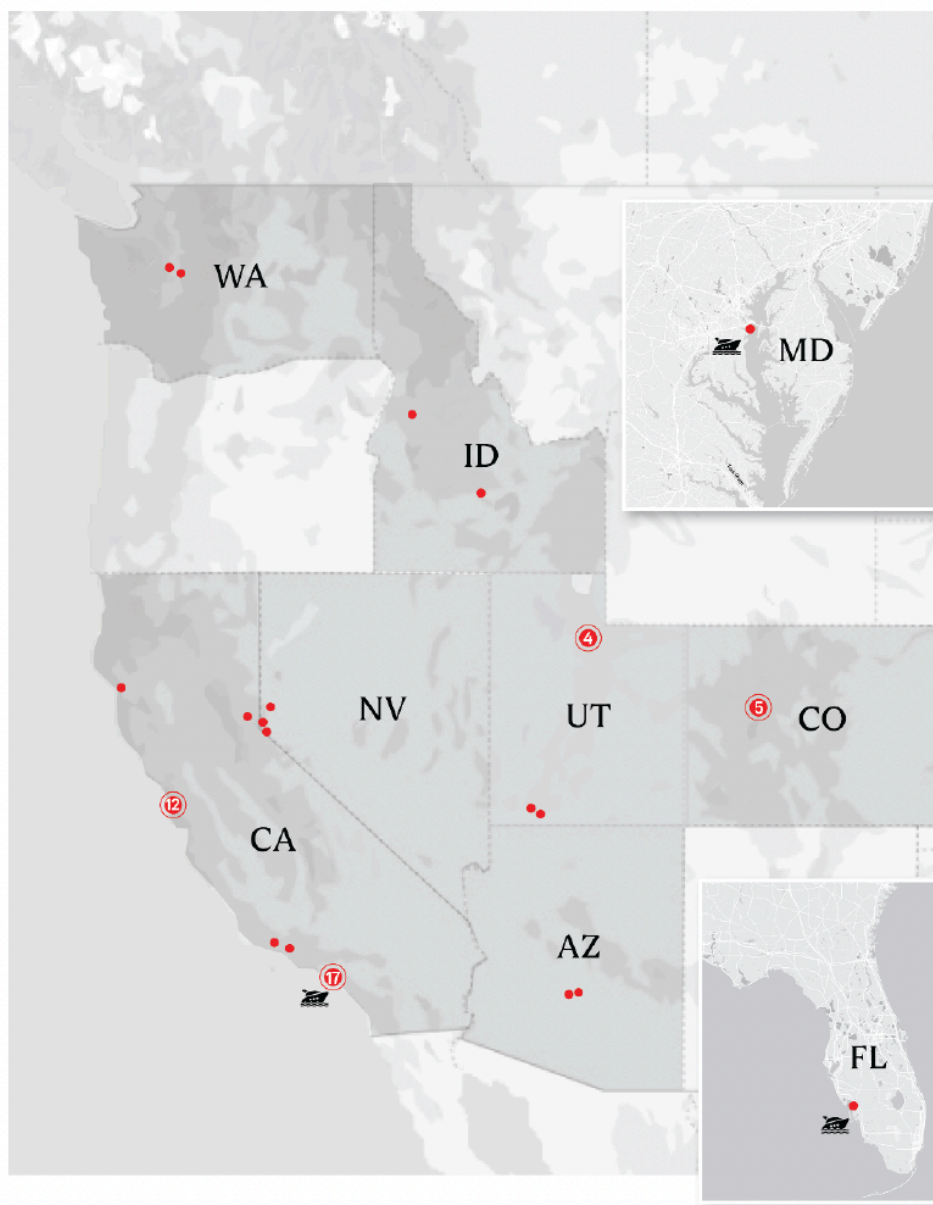
POWERED BY A GLOBALLY
RECOGNIZED, LUXURY BRAND

ENGEL & VÖLKERS®



THE GESTALT GROUP ADVANTAGE

With Engel & Völkers Gestalt Group, you have access to a network of nearly 1,500 real estate professionals in 50 shops located in the most lucrative real estate markets.



CALIFORNIA

7+ States | 50 Shops | 1480+ Advisors | \$5B 2022 Sales Volume

- | | | | |
|--------------------|-------------------|---------------------|--------------|
| • Santa Barbara | • San Marino | • Long Beach | • Santa Rosa |
| • Santa Ynez | • La Cañada | • Newport Beach | • Healdsburg |
| • Channel Islands | • Glendale | • Laguna Beach | • Napa |
| • Camarillo | • Encino | • San Francisco (2) | • St. Helena |
| • Westlake Village | • Pasadena | • Sausalito | • Sonoma |
| • Calabasas | • Santa Clarita | • Danville | • Mendocino |
| • Beverly Hills | • Manhattan Beach | • Mill Valley | • Truckee |
| • Burbank | • Redondo Beach | • San Anselmo | |

By The Numbers

ENGEL&VÖLKERS®
AMERICA'S

6,675

PROFESSIONALS

309

SHOPS

8

COUNTRIES



LUXURY REDEFINED

Being a part of the Engel & Völkers global network only strengthens our ability to assist clients with buying and selling here locally or across the world.

The company's global syndication platforms and wide resource network empower us to give concierge-level service to local, national, and global buyers looking to participate in the Northern California Real Estate Market.

ENGEL&VÖLKERS®
GLOBAL IMPACT

15.4

Billion

MEDIA IMPRESSIONS

\$ 1.3

Billion

GLOBAL COMMISSION REVENUE

198

%

GCI GROWTH - AMERICAS

WHAT OUR CLIENTS SAY



M. Schaffer
Sonoma, CA

“Profound Expertise In The Local Market.”

Wow, as soon as we started our journey as first-time homebuyers, we were overwhelmed by the daunting task of finding the perfect home in Sonoma. However, our worries vanished the moment we met Lindsey and Ryan!

Their profound expertise in the local market and remarkable ability to translate our wants and needs made all the difference.



D. Halvard
Santa Rosa, CA

“Patient Guidance & Unparalleled Professionalism.”

With their patient guidance and unwavering dedication, they walked us through each step, leaving us feeling confident and well-informed at every turn.

Thanks to Lindsey and Ryan’s unparalleled professionalism, we now own a home that fulfills every single one of our needs. They are the epitome of real estate excellence!



R. Salvador
Healdsburg, CA

“Market Expertise & Unwavering Dedication.”

The luxury home market in Wine Country presents an exhilarating yet daunting opportunity. The complexity of navigating the high-end real estate market seemed only possible once we were introduced to Lindsey and Ryan.

Their market expertise and unwavering dedication to professionalism allowed us to find our ideal home and win a competitive offer.



T. McKinney
Larkspur, CA

“Deep-rooted Knowledge of Luxury Market.”

Lindsey & Ryan’s deep-rooted knowledge of the local luxury market and an extraordinary knack for understanding and actualizing our requirements gave us the piece of mind needed to succeed.

Through their meticulous guidance and unwavering commitment, Lindsey and Ryan guided us through each step of the process, instilling a sense of confidence and clarity. Lindsey and Ryan stand as ideals of excellence in luxury real estate.



ACCOUNTABILITY
BALANCE
COMMUNITY



THE EHRLICHER STYLES GROUP DELIVERS RESULTS
WITH COMMITMENT & COLLABORATION, FINESSE WITH
WORLD CLASS STYLE & SOPHISTICATION,
AND RELATIONSHIP WITH
LOCAL APPROACHABILITY & FRIENDLINESS.

We take pride in representing our client's to the highest degree possible and hold ourselves accountable for every move made within the transaction. Being accountable and trusted by our clients and our real estate associates is of great importance when it comes to transparency, safety and transacting business.

The home buying and selling process could be considered one of the most stressful situations a person can experience. As high-level advisors, it's our job to take the 'stress' aspect away from a client's mindset during the sales process.

We do this by creating a balanced approach to the transaction with a timeline in place, potential unknowns in the transactions to be accounted for and the sales process to be a smooth transition to the next chapter in their life.

Sonoma County has been home to members of the Ehrlicher Styles Group for over and we are deeply involved in the community. It's important for our Real Estate Group to remain involved in the community on all aspects, from business related to volunteering.

We wear our hearts proudly on our sleeves and continue to be an energetic, top producing team living and working here in Sonoma, Napa & Marin County.

ESG



We look forward to
supporting you on your
Homeownership Journey.

Lindsey Ehrlicher Styles

LICENSE PARTNER
& LICENSED REALTOR®
DRE # 01879097

+1 (707) 718-2116
LStyles@evrealestate.com

Ryan Styles

BROKER ASSOCIATE, PRIVATE OFFICE
ADVISOR & LICENSED REALTOR®
DRE # 01276948

+1 (707) 540-2000
RStyles@evrealestate.com